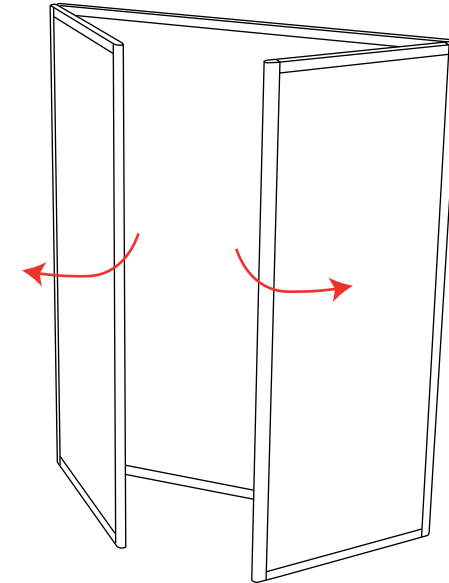


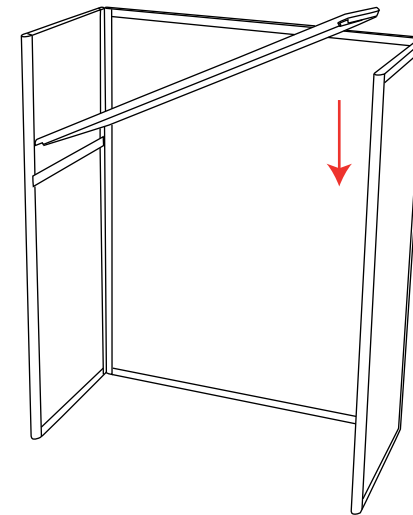
# Gear Edge Straight Counter



1



2



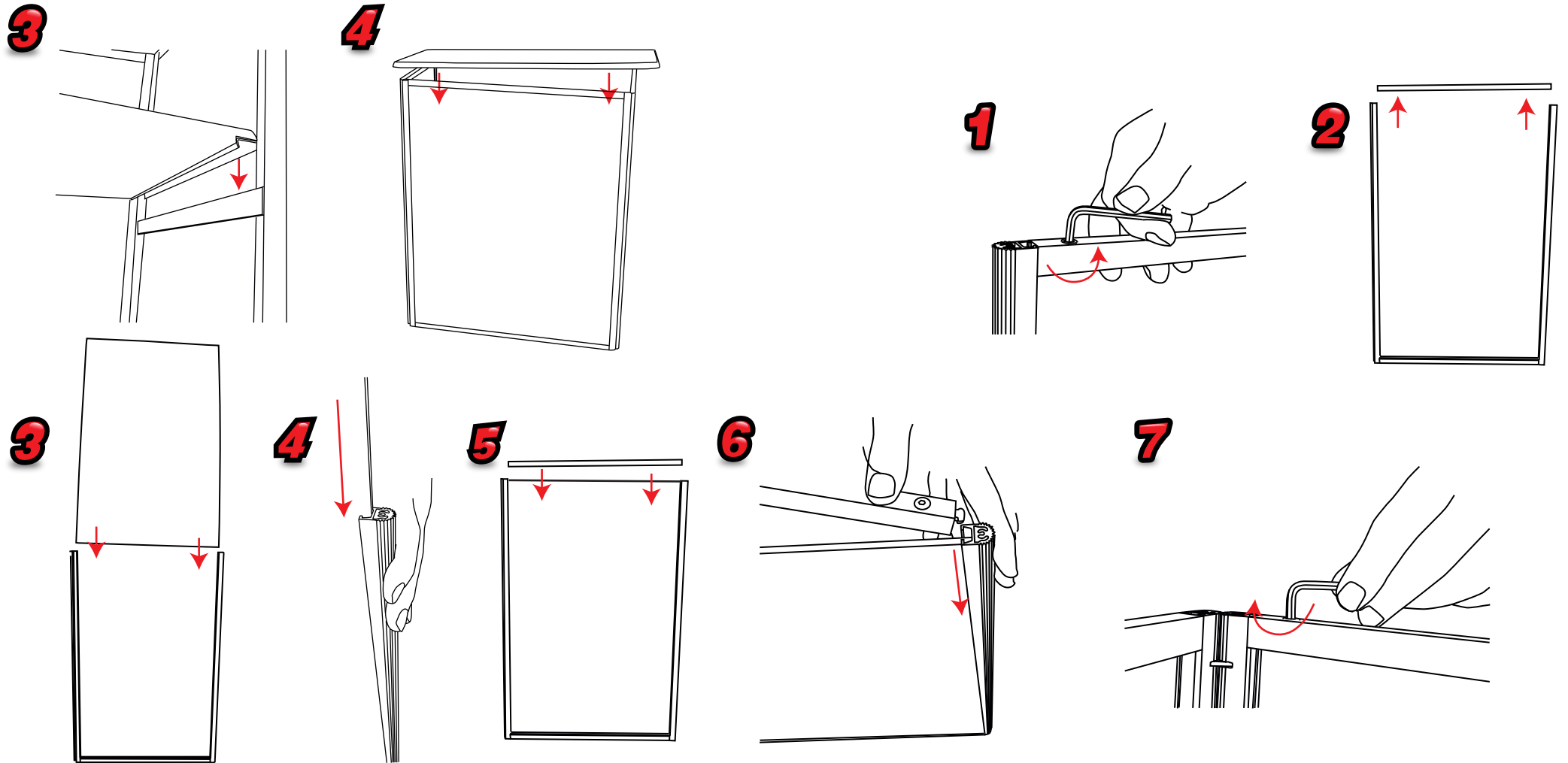
Frame only: 12.20kg  
Frame With infill: 13.20kg




Visible Graphic Area  
Front Panel: 867mm(h) x 685mm(w)  
Side panel: 867mm(h) x 315mm(w)

# Gear Edge Straight Counter

## Inserting Graphics



 Included in your kit is a pack of 60 x 50mm soft hollow plastic packers which if required, can be inserted into the inner frame channel filling the void behind your graphic panel

Important- Please be careful not to place fingers near the gear edge mechanism

Gear Edge Straight Counter

**Installation**